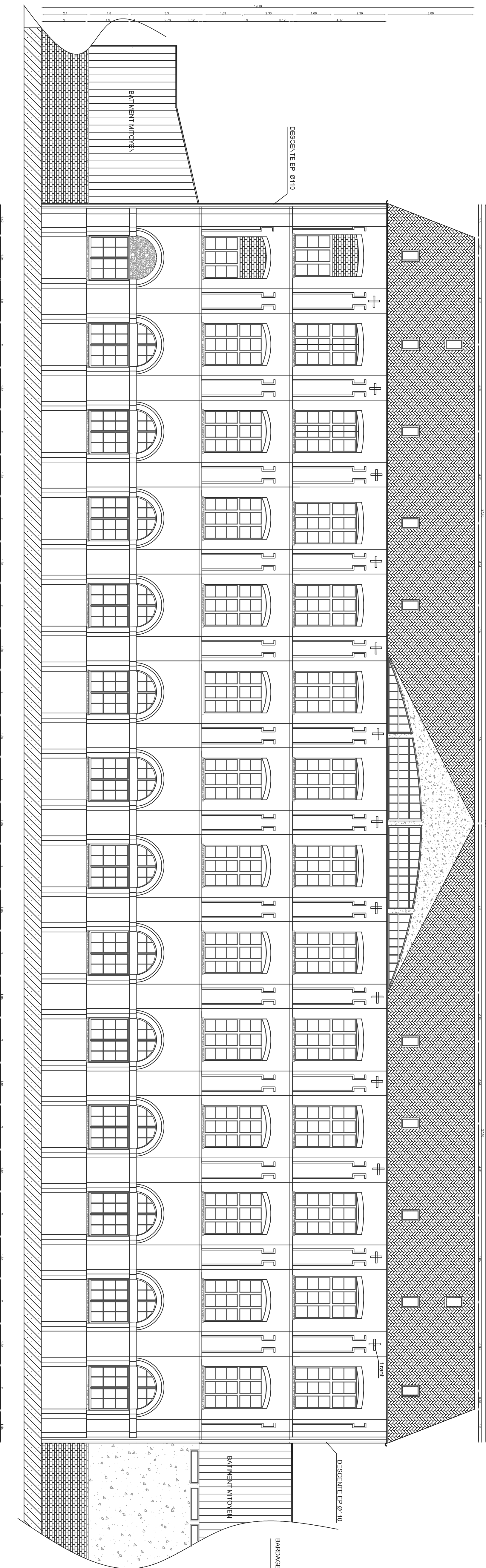
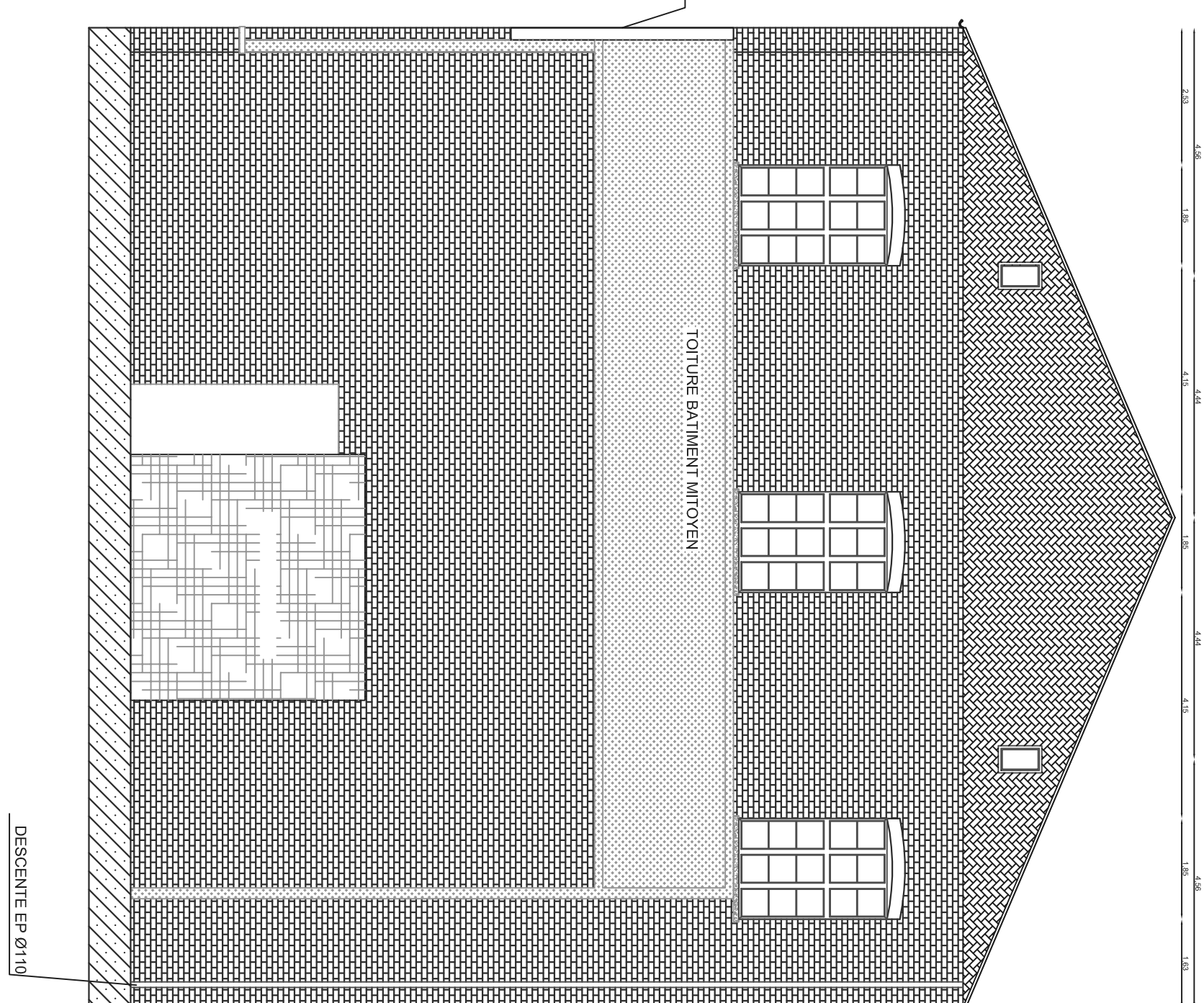


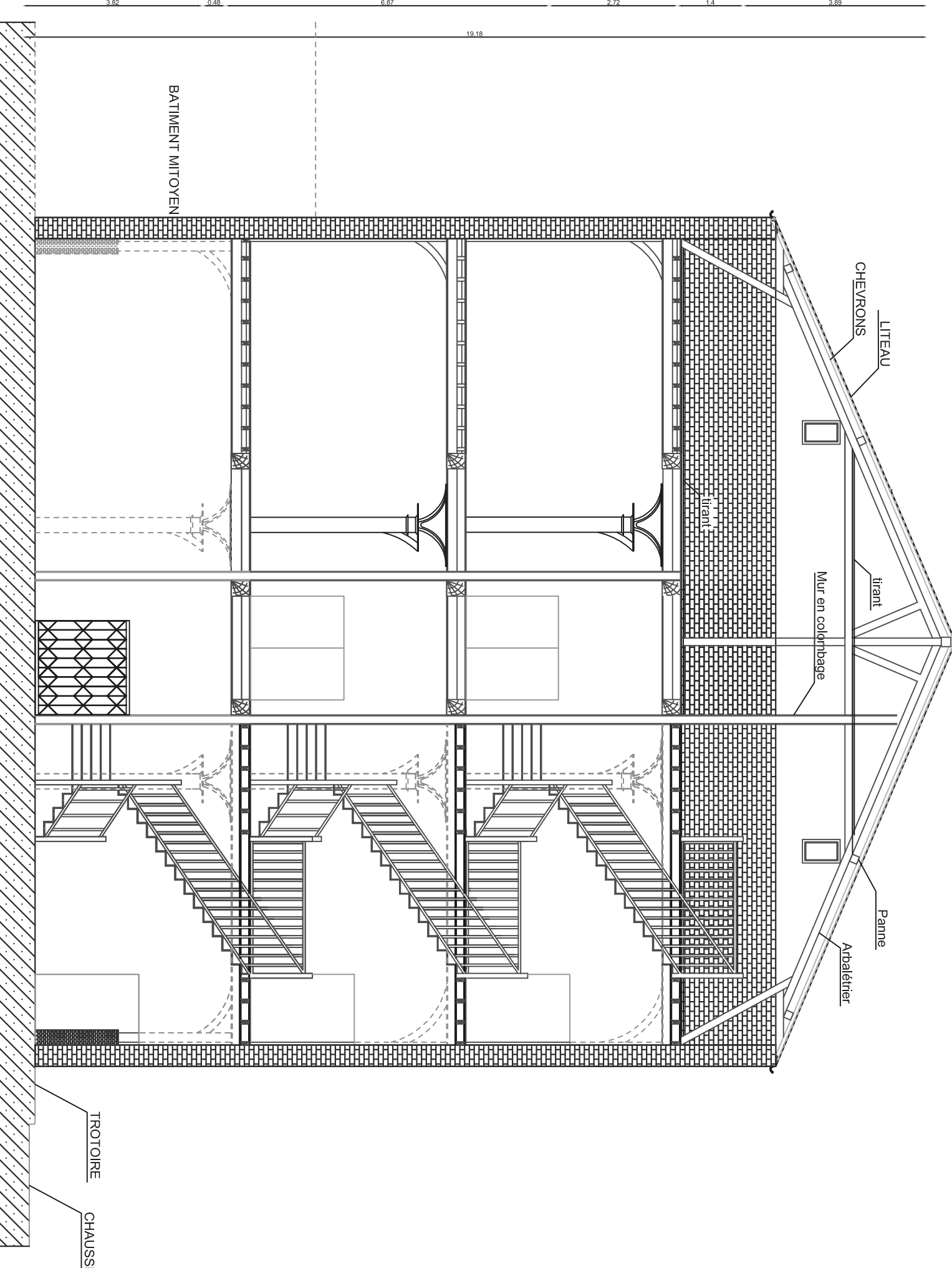
FACADE COTE RUE LYONS LA FORET



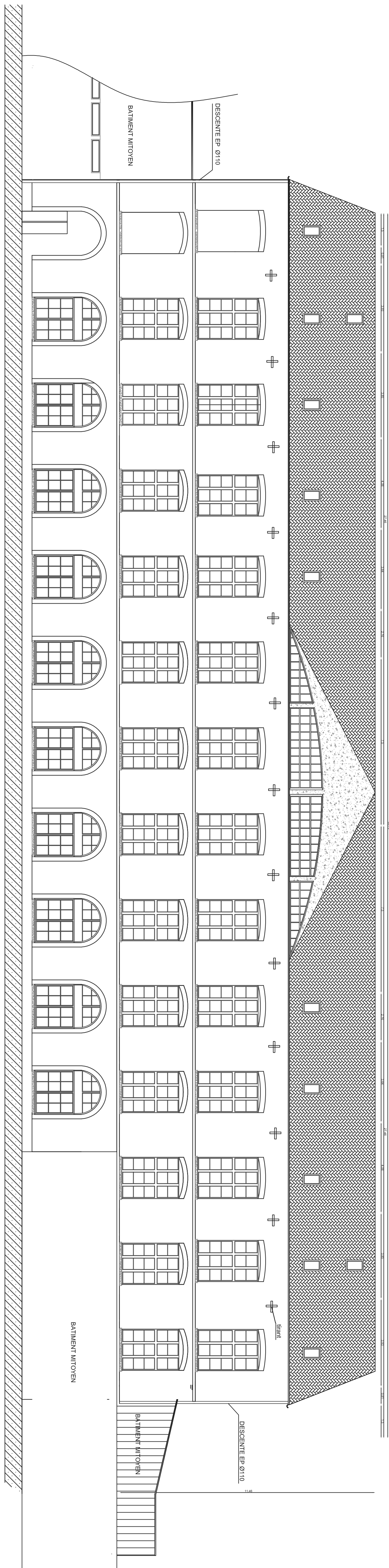
FACADE COTE BATIMENT MITOYEN



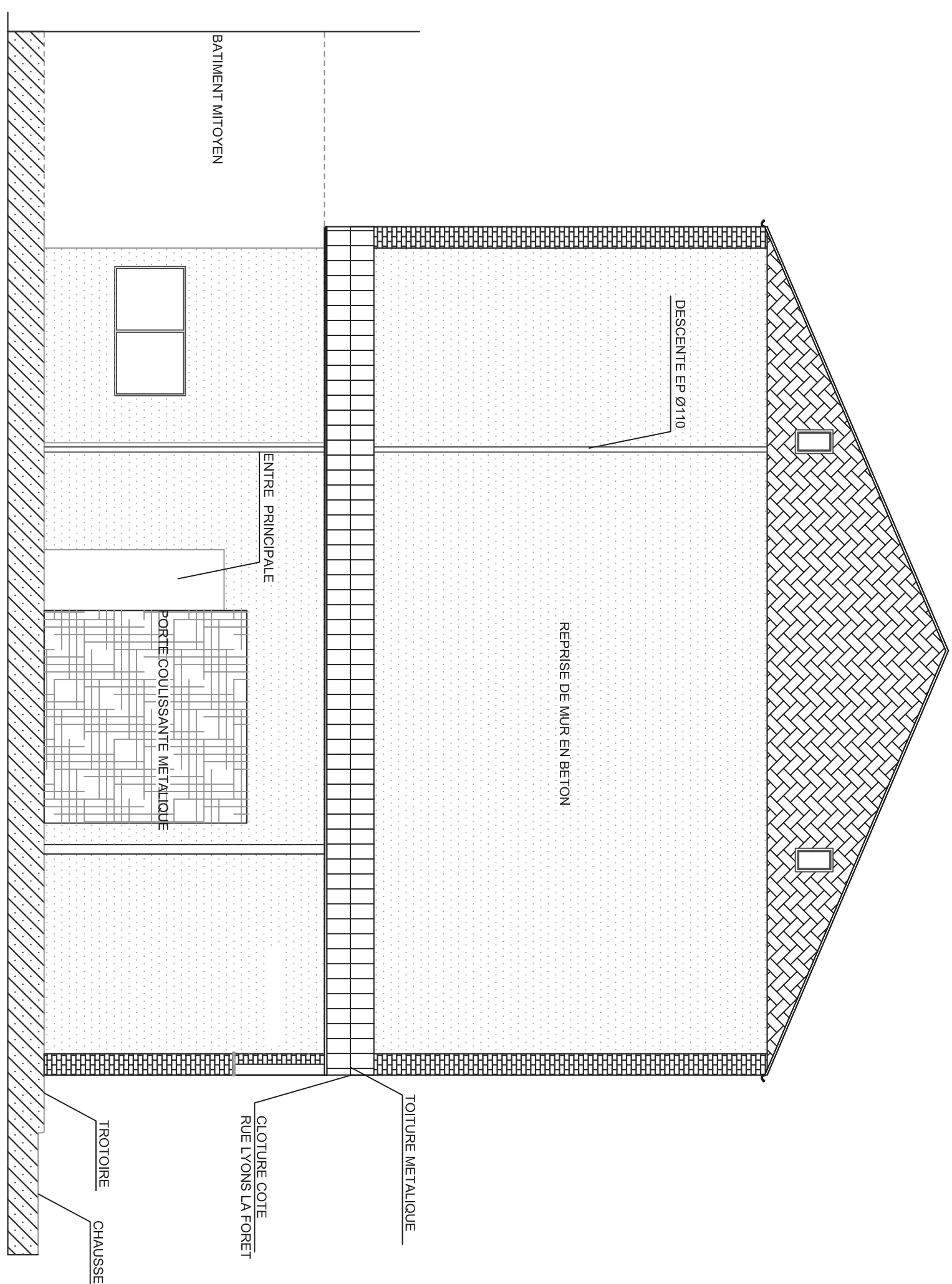
COUPE TRANSVERSAL



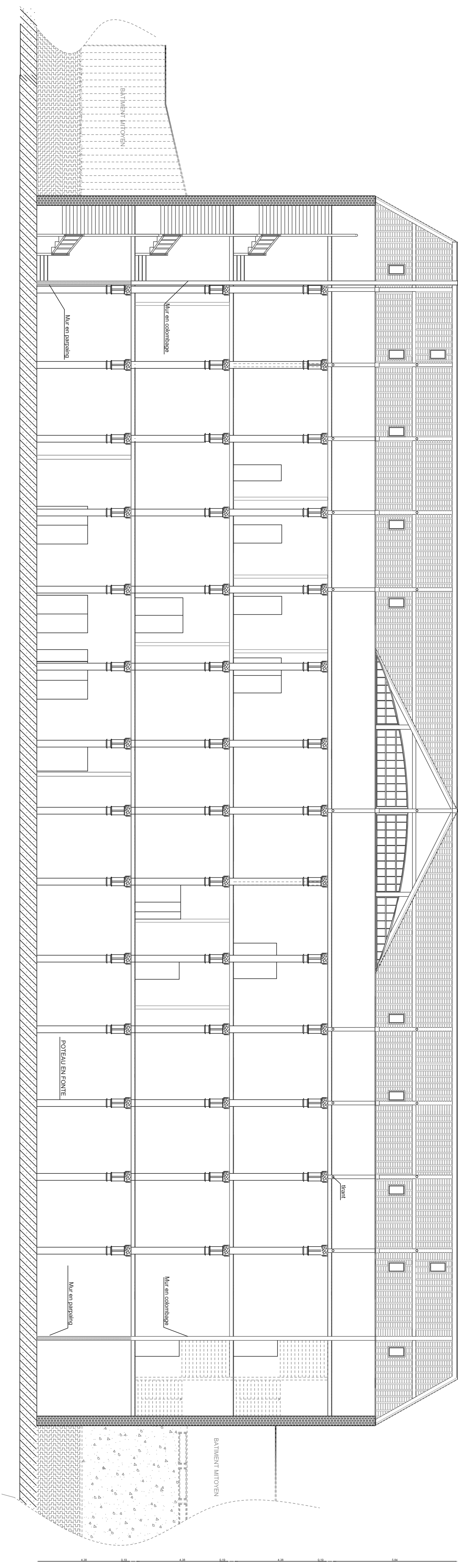
FACADE COTE COURS



FACADE COTE PARKING



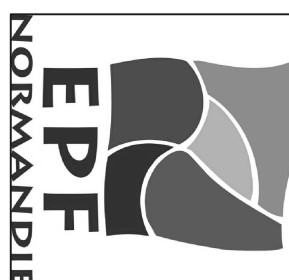
COUPE LONGITUDINALE



Modifications				
h				
g				
f				
e				
d				
c				
b				
a				
	A			
Ind	Nature	Date	Dessine	Commis
		16/07/2010	BSW	JBS

CE DESSIN NE PEUT ETRE REPRODUIT NI COMMUNIQUE A DES TIERS SANS AUTORISATION

ETABLISSEMENT PUBLIC FONCIER DE NORMANDIE



VILLE DE ROUEN
DIAGNOSTIC VISUEL DU FILATURE LEVELLE
RUE DE LYONS LA FORET
FACADES & COUPES

FACADE RUE DE LYONS LA FORE
 FACADE COTE PARKING
 FACADE COTE COURS
 FACADE COTE BATIMENT
 COUPE LONGITUDINALE
 COUPE TRANSVERSALE

Date: 16/07/2010	Affaire F. LEVEILLE	
Echelles: 1/100		
Dessine par: BSW		
Vérifié par: JBB		
Contrôle par: JBB		
Chef projet :		
PLAN N°:2010-1-	A	A